



Domino Synchronizer for SuperOffice CRM

Manual Deployment of the Domino Synchronizer

Contents

Installation of the Domino Synchronizer (Domino part)	3
Installing the Domino Synchronizer (Domino Part)	3
Manual deployment of the Domino Synchronizer	4
Notes.ini settings	4
Auto-accepting meeting requests - nrouter.exe	5
Notes Traveler - ntraveler.exe	6
Replication – nreplica.exe	6
Stop the Domino server	6
Installing the Domino Database and Templates	7
Install the servlet files	11
Install the “nfobridg.dll” server file	11
Servlets Properties	12
Finalizing the installation	14
Start the Domino server	14
Refresh the database design	14
Signing the databases and templates	15
Signing the database	16
Signing the template files	17

Installation of the Domino Synchronizer (Domino part)

1

Installing the Domino Synchronizer (Domino Part)

This is the first part of the installation process for the Domino Synchronizer for SuperOffice CRM.

To install Domino Synchronizer for SuperOffice CRM (Domino part) you'll need to run the setup file; double-click on the file to start the installation procedure.

Follow the steps of the installation procedure to install Domino Synchronizer for SuperOffice CRM. The installation program will create a temporary folder that holds the Domino Synchronizer for SuperOffice CRM files for the Domino part.

The installation will ask you for the location where the temporary installation files will be stored for the final installation of the Domino Synchronizer for SuperOffice CRM. Change the folder if needed.

After a successful installation of the Domino Synchronizer for SuperOffice CRM (Domino Part) we have the following options:

- Launch Set-up:

This option shows you a configuration form where all the changes will be made for you. This is the safest option to choose when you are not an experienced Lotus Notes Domino System Administrator.

- Do a manual configuration:

This option is for the Lotus Notes Domino System Administrator that knows his system.

- Check the option "**Launch Set-up**" to use the configuration tool:

Go to the chapter "*Automatic Domino Synchronizer installation*" in the preparation manual and read the instructions.

- Leave the option "**Launch Set-up**" unchecked when you want to perform a manual configuration:

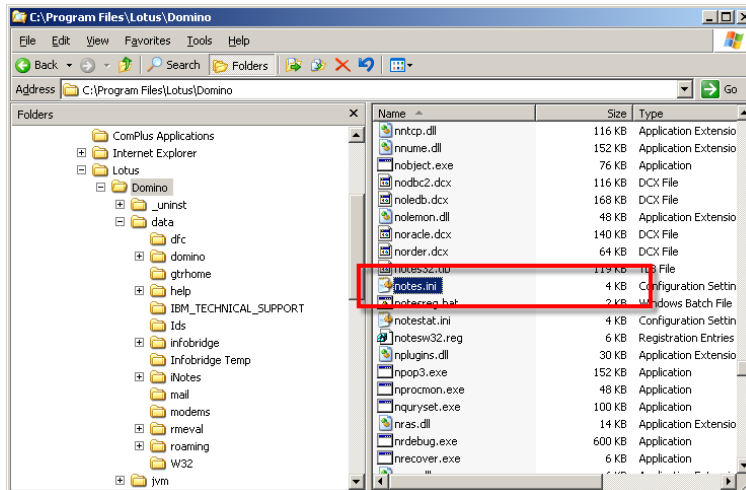
Go to the chapter "*Manual deployment of the Domino Synchronizer*" and read the installation instructions.

- Press the "**Finish**" button to finish this step of the installation.

Manual deployment of the Domino Synchronizer

Notes.ini settings

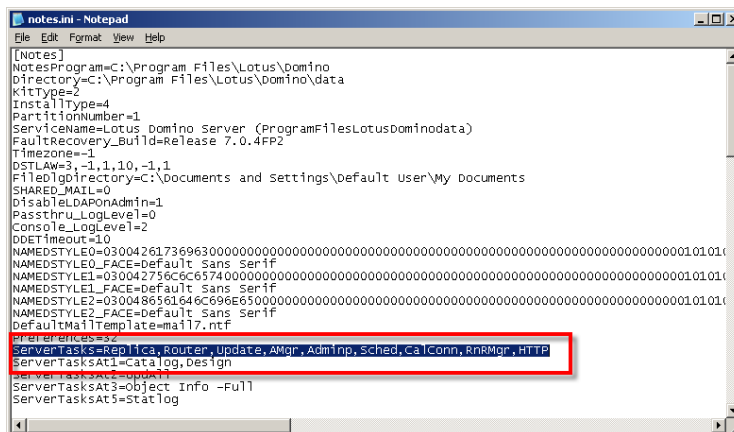
- Go to the Domino program folder (see image below).



NOTE

The 'Notes.ini' file should be located in the Domino program file folder (This is the directory containing the Domino executable such as nserver.exe).

- Open the "Notes.ini" file in a text editor such as Notepad.
- Locate the line which starts with "ServerTasks="



- Ensure that the "HTTP" task is included in this line, so that the line appears similar to the image above (there can be more specific Domino tasks present do not change these specific settings).
- Locate the line which starts with "EXTMGR_ADDINS=".
- We have to add the "nfobridg.dll" setting to the "EXTMGR_ADDINS=" line.
- If the line does not exist then add the line to the 'notes.ini' file.

```

notes.ini - Notepad
File Edit Format View Help
SCHEDULE_DB_BOSS=1
SCHEDULE_VERSION=4
SCHEDULE_VERSION_MINOR=8
MTEtabld=0
CLEANUP_EVENTS4_MESSAGES_VIEW=0
CLEANUP_EVENTS4_STATS_VIEW=0
webAdminSetup=716
DominoConfigLevel=1
DELETE_DUPLICATE_PUID_NOTES=0
DDMSetup=700400
CONSOLE_DOMINOR7/INFOBRIDGE=80 300 7 356 11 1024 738
EVENTSSetup=700400
CATALOG_UPDATED_BY_BUILD=510
ADMINP_LAST_SAVED_POLICY_TIME=11/02/2010 01:29:48 PM
ADMINP_LAST_SAVED_USER_TIME=11/02/2010 01:29:19 PM
ADMINP_LAST_SAVED_DIRECTORY_TIME=10/20/2010 08:04:31 AM
CLEANUP_EVENTS4_ON_FIRST_NIGHT=0
CLEANUP_DDM_NUMB_AND_PAR=0
CLEANUP_EVENTS4_DDMFILTERS_VIEW=0
CLEANUP_EVENTS4_DDMCONFIG_VIEW=0
EXTMGR_ADDINS=nfobrldg.dll
FaultRecovery=1
CleanupTimeout=600
CFP_LP_PREV=Release 7.0.4FP1|July 20, 2009
CFP_LP_BASE_VERSION=Release 7.0.4|March 23, 2009
CFP_LP_CURRENT=Release 7.0.4FP2|June 06, 2010
JrnTEnbld=0

```

8. We need to add the **"SONO_Task_List"** line to the **"notes.ini"** file.
9. Add the following line to the end of the **"notes.ini"** file.
 - a. SONO_Task_List=nserver.exe, nhttp.exe

```

notes.ini - Notepad
File Edit Format View Help
SCHEDULE_VERSION=4
SCHEDULE_VERSION_MINOR=8
MTEtabld=0
CLEANUP_EVENTS4_MESSAGES_VIEW=0
CLEANUP_EVENTS4_STATS_VIEW=0
webAdminSetup=716
DominoConfigLevel=1
DELETE_DUPLICATE_PUID_NOTES=0
DDMSetup=700400
CONSOLE_DOMINOR7/INFOBRIDGE=80 300 7 230 223 898 662
EVENTSSetup=700400
CATALOG_UPDATED_BY_BUILD=510
ADMINP_LAST_SAVED_POLICY_TIME=11/10/2010 12:27:14 PM
ADMINP_LAST_SAVED_USER_TIME=11/10/2010 12:19:16 PM
ADMINP_LAST_SAVED_DIRECTORY_TIME=11/04/2010 01:53:08 PM
CLEANUP_EVENTS4_ON_FIRST_NIGHT=0
CLEANUP_DDM_NUMB_AND_PAR=0
CLEANUP_EVENTS4_DDMFILTERS_VIEW=0
CLEANUP_EVENTS4_DDMCONFIG_VIEW=0
CLEANUP_EVENTS4_METHODS_VIEW=0
EXTMGR_ADDINS=nfobrldg.dll
FaultRecovery=1
CleanupTimeout=600
CFP_LP_PREV=Release 7.0.4FP1|July 20, 2009
CFP_LP_BASE_VERSION=Release 7.0.4|March 23, 2009
CFP_LP_CURRENT=Release 7.0.4FP2|June 06, 2010
SONO_Task_List=nserver.exe, nhttp.exe
JrnTEnbld=0

```

NOTE
 When auto-processing of meeting-requests is used *nrouter.exe* should be added to *SONO_Task_List*, see chapter Auto-accepting meeting requests - *nrouter.exe* for more information.

NOTE
 When Lotus Notes Traveler is used *ntraveler.exe* should be added to *SONO_Task_List*, see chapter Lotus Notes Traveler - *ntraveler.exe* for more information.

10. Save the file.

NOTE
 Be sure that you save the *notes.ini* file after making changes.

Auto-accepting meeting requests - *nrouter.exe*

This application is part of the Lotus Notes Domino installation; it handles the auto-processing of meeting requests. This can be turned on by the Lotus Notes System Administrator. When auto-processed meetings should be synchronized to SuperOffice the *nrouter.exe* task should be added to the *SONO_Task_List* in the *notes.ini*.

Please note that this will result in a slight decrease in the Synchronizer performance.

Lotus Notes Traveler - ntraveler.exe

By default the Lotus Notes Synchronizer does not handle any appointments created through the Lotus Notes Traveler. To make sure these appointments are captured as well ntraveler.exe should be added to the SONO_Task_List in the notes.ini.

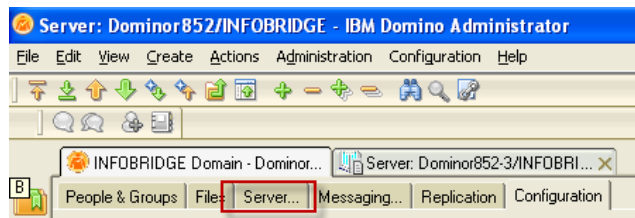
Replication – nreplica.exe

All appointments and tasks that are replicated from a different Domino Server will be pickup by the Domino Synchronizer. However if the Domino Server is running the Domino Synchronizer execute replication by a “PULL” a task should be added in the SONO_Task_List section in the Notes.ini file.

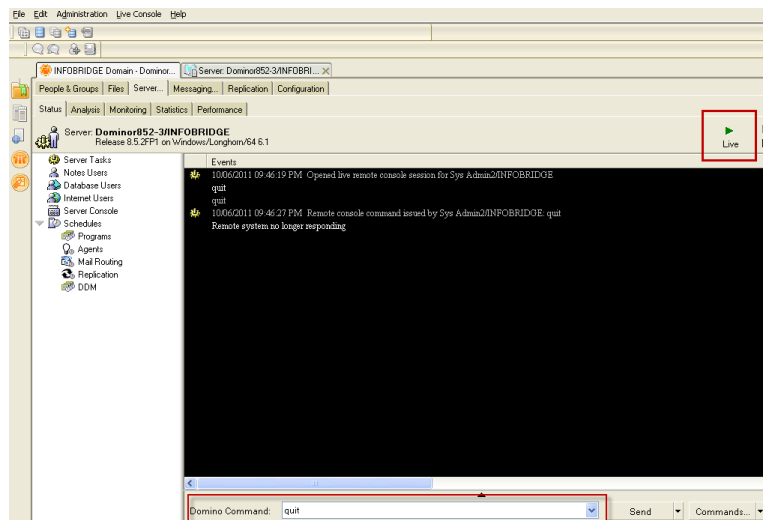
For more information about replication visit the InfoBridge knowledge base article: <http://kb.infobridge.com/hc/en-us/articles/203808191>

Stop the Domino server

1. Go to the **Domino Server**.
2. Open the Domino Administrator and go to the “**Server**” tab (see image below).



3. Go to the **Server Console** and press the ‘**Live**’ button (see image below).
4. and enter the following command: ‘**Quit**’.



5. The Domino Server is now shutting down.

REMARK / NOTE

If this is the first Domino Synchronizer for SuperOffice CRM installation you perform, you don't have to shut down the Domino Server before you install the Domino Synchronizer databases and templates.

6. Continue with the chapter “**Installing the Domino Synchronizer databases and templates**”.

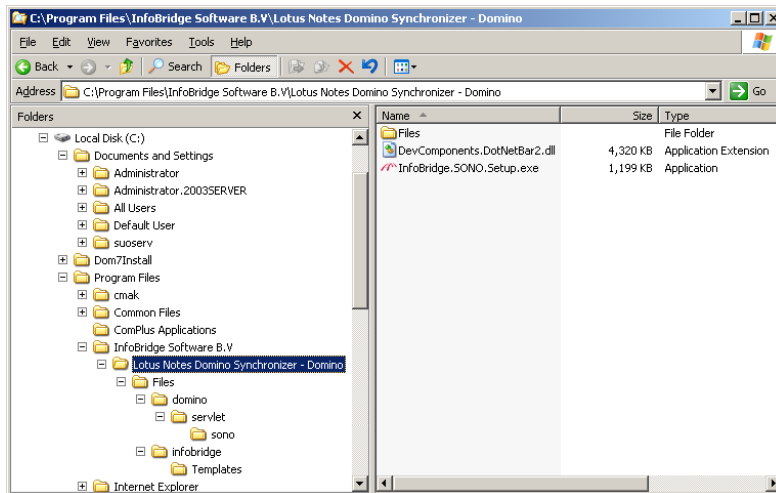
Installing the Domino Database and Templates

In the installation folder that was created during the setup procedure of the Domino Synchronizer for SuperOffice CRM we can find all the files we need for the installation

1. First we are installing the Domino Synchronizer databases and Domino Synchronizer templates.
2. Open the installation folder.

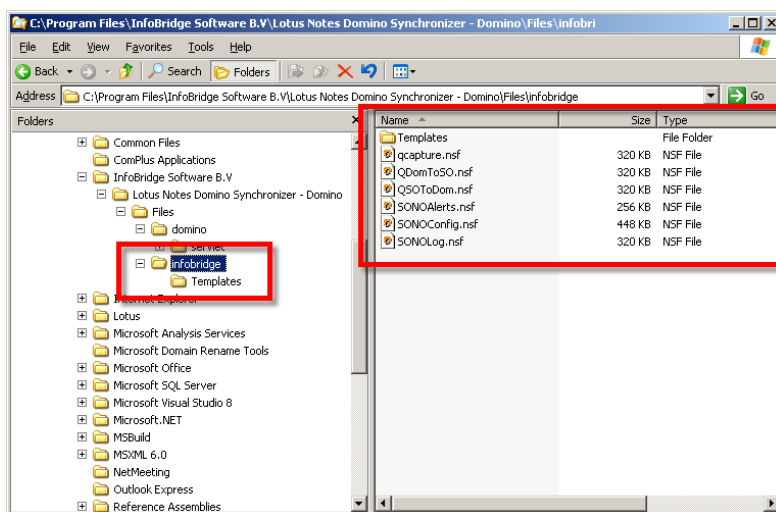
EXAMPLE

C:\Program Files\InfoBridge Software B.V.\Lotus Notes Synchronizer - Domino.

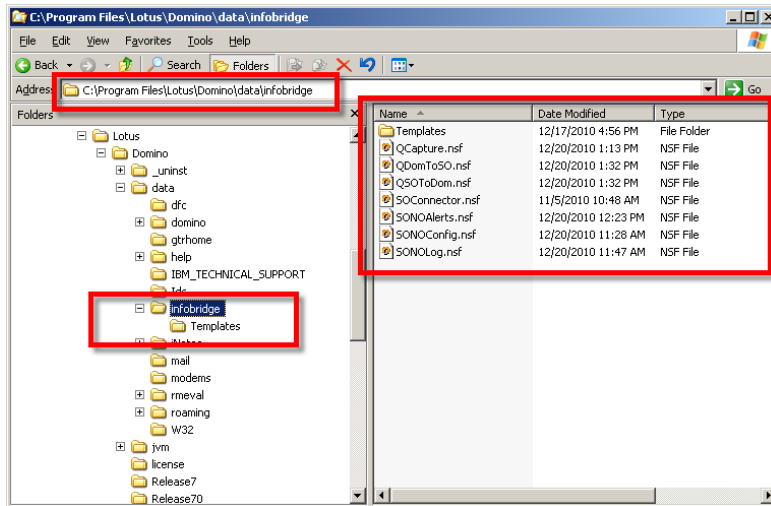


What you find in this installation folder are the following components:

- Database files.
 - Templates files.
 - Servlet files.
 - nfobridg.dll file.
 - servlets.properties file.
3. Copy the contents of the **“infobridge\Template”** folder (containing several Domino Synchronizer databases and templates).



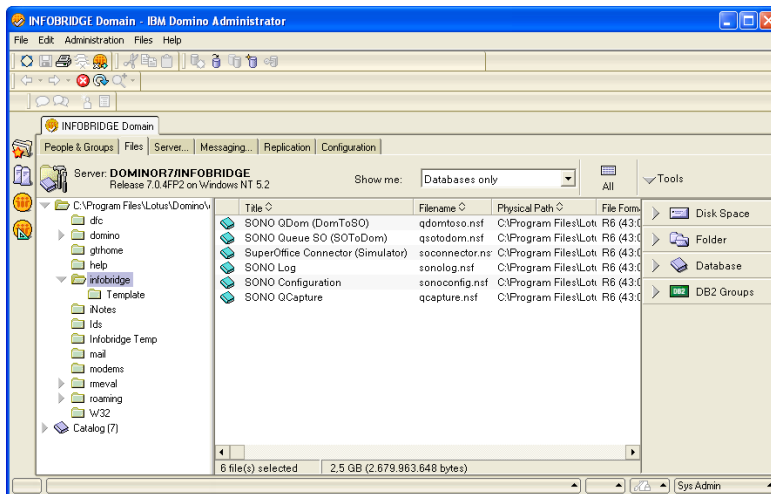
4. To the **Domino program path** you can copy the complete **“infobridge”** folder.



REMARK

It's possible that the Domino Server files are in a different folder on the server than the image below shows.

5. Open the Domino Administrator console on the Notes client.
6. Select the **'Files'** tab on the **'[COMPANY NAME] Domain'** tab.
7. Select the **'InfoBridge'** folder.

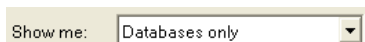


8. Now we have to sign all the databases in the **'infobridge'** folder with a **"Server ID"** or an **"Administrator ID"**.

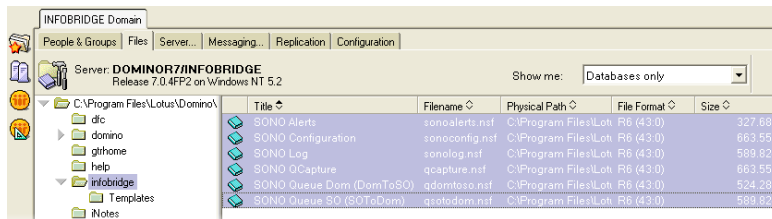
NOTE

*It is recommended that either the Server ID or an Administrator ID is used. The ID which you use to sign **MUST** have at least Editor (with Delete) Access to all the Domino user's mail databases.*

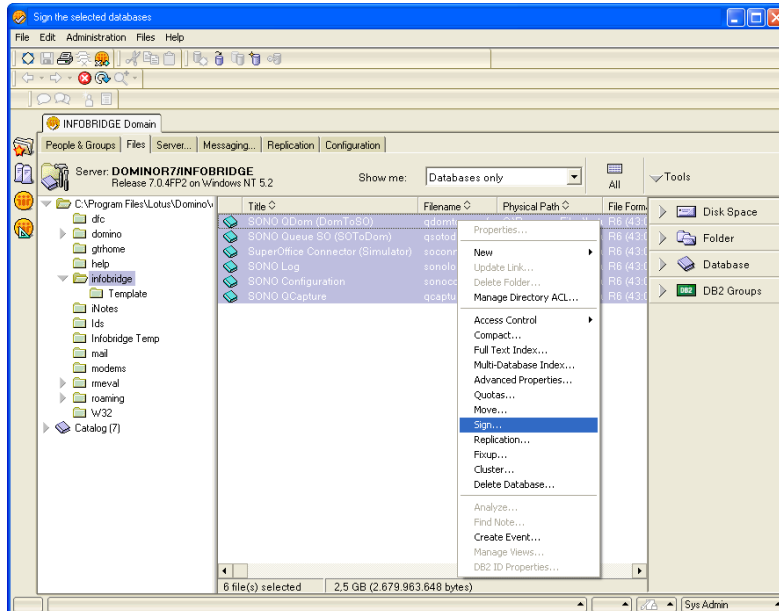
9. In the drop down box **'Show me'** make sure that you have selected **"Databases only"**.



10. Select all the files in the folder **"infobridge"**

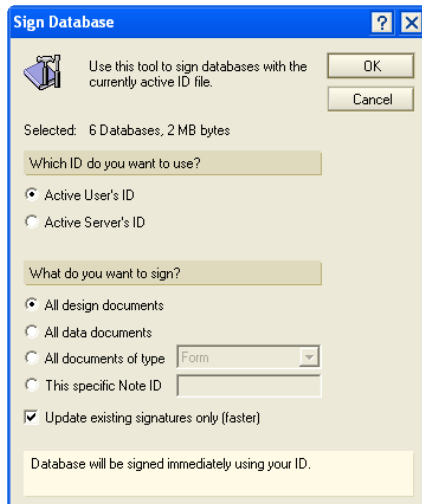


11. Right click with the mouse on one of the selected file items and a context sensitive menu is shown.



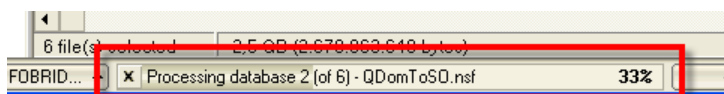
12. Click the 'Sign...' menu item.

13. A popup screen is shown, here you have to select the 'ID' to sign the database files with.



14. When you have made the appropriate choices you can press the 'OK' button.

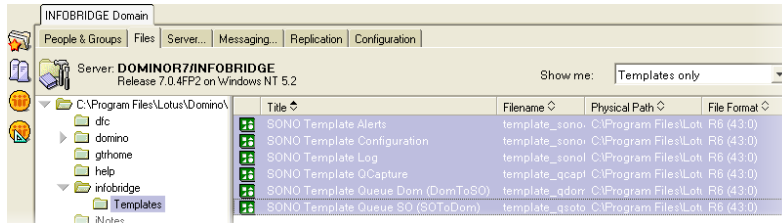
15. A progress bar is shown in the bottom of the screen when the settings you have set are applied to the databases (see image below).



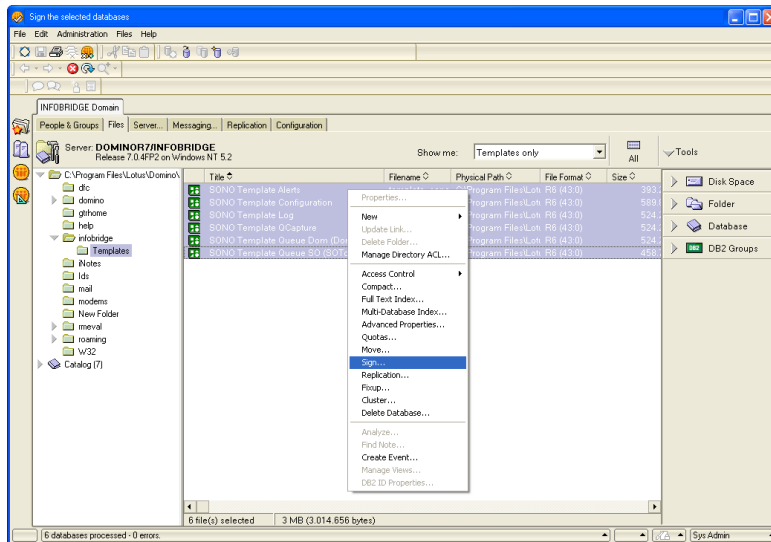
16. Now we have to sign the templates files.
17. Now we have to sign all the databases in the 'infobridge\Template' folder with a "Server ID" or an "Administrator ID".
18. Select in the 'Show me' selection box 'Templates Only'.



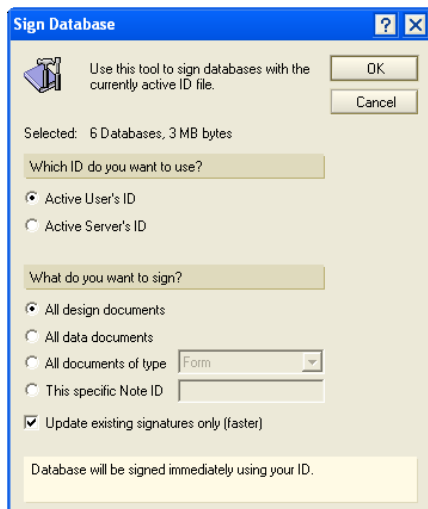
19. Select all the files in the folder 'infobridge\Templates'.



20. Right click with the mouse on one of the selected file items and a context sensitive menu is shown.

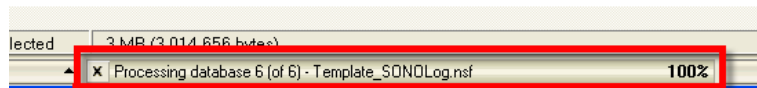


21. Click the 'Sign...' menu item
22. A popup screen is shown, here you have to select the 'ID' to sign the database files with.



23. When you have made the appropriate choices you can press the 'OK' button.

24. A progress bar is shown in the bottom of the screen when the settings you have set are applied to the templates (see image below).



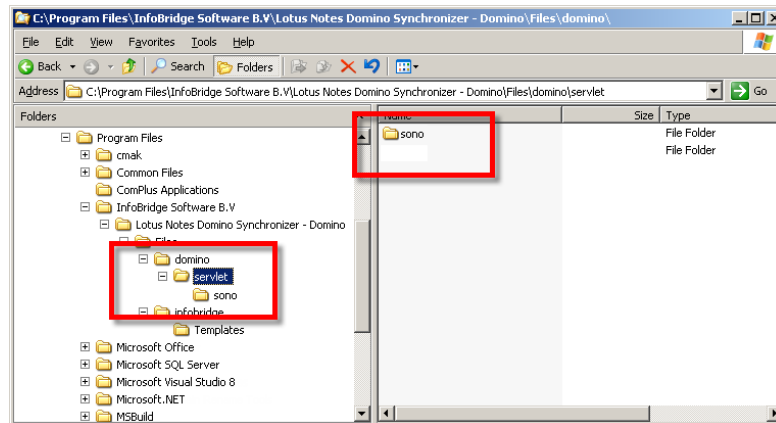
Install the servlet files

1. Open the installation folder.

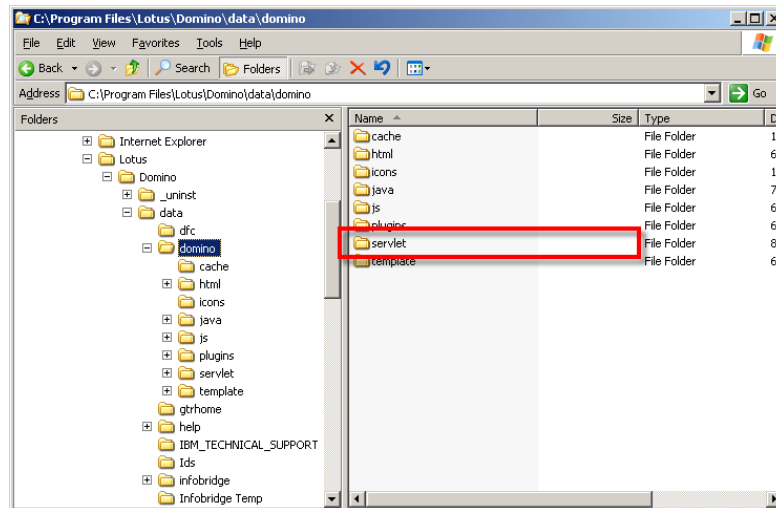
EXAMPLE

C:\Program Files\InfoBridge Software B.V.\Lotus Notes Synchronizer - Domino.

2. Copy the complete “**servlet**” folder which contains all the files from the installation folder.



3. to the **Domino program\data\domino path** folder.



4. You are done copying the “**servlet**” files.

Install the “nfobridg.dll” server file

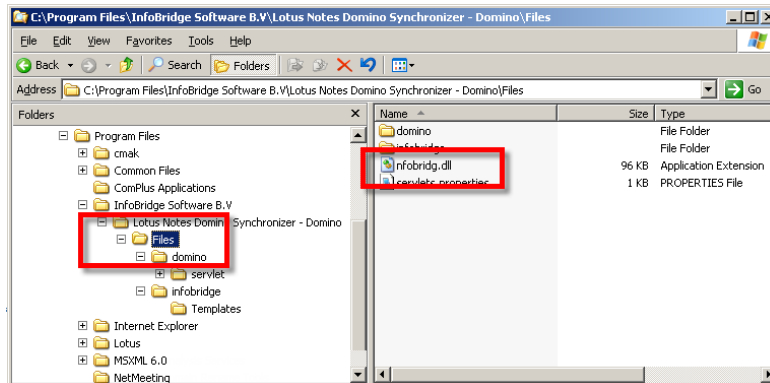
1. Open the installation folder.

EXAMPLE

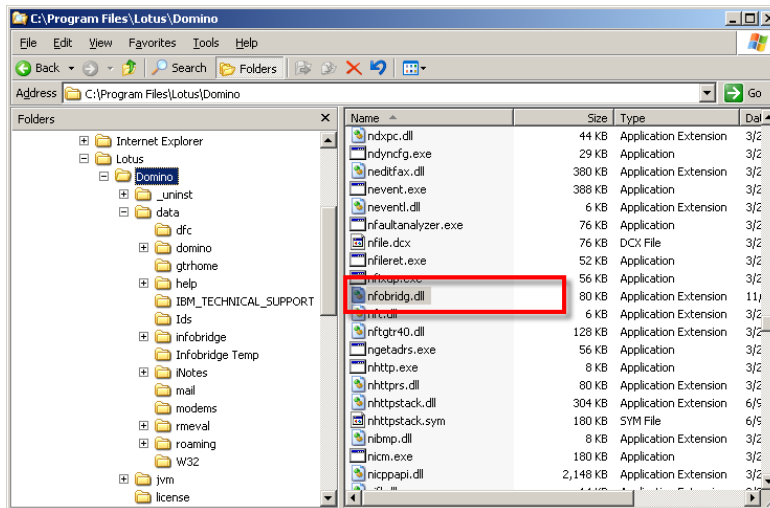
C:\Program Files\InfoBridge Software B.V.\Lotus Notes Synchronizer - Domino.

2. Verifying the Domino Server Architecture version (32bit/64bit)
<http://kb.infobridge.com/hc/en-us/articles/203747992>

- Pick the correct version of the dll according to the Domino server version, either “**nfobridg.dll**” or “**nfobridg_64.dll**”.
- Copy the selected dll from the installation folder and rename it to “**nfobridg.dll**”.



- Place it in the **Domino program path** folder.



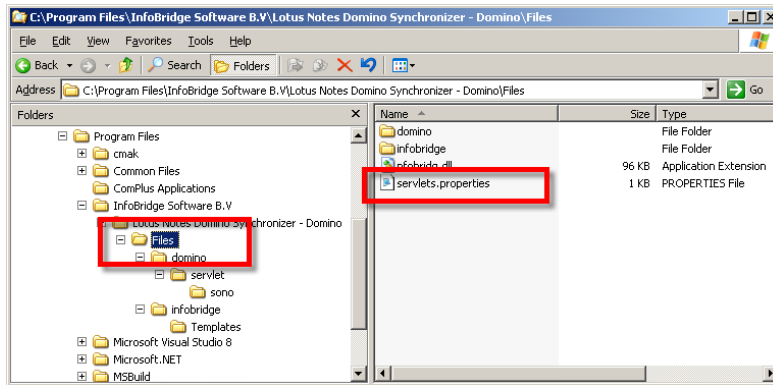
NOTE
This is the directory containing the Domino executable such as nserver.exe.

Servlets Properties

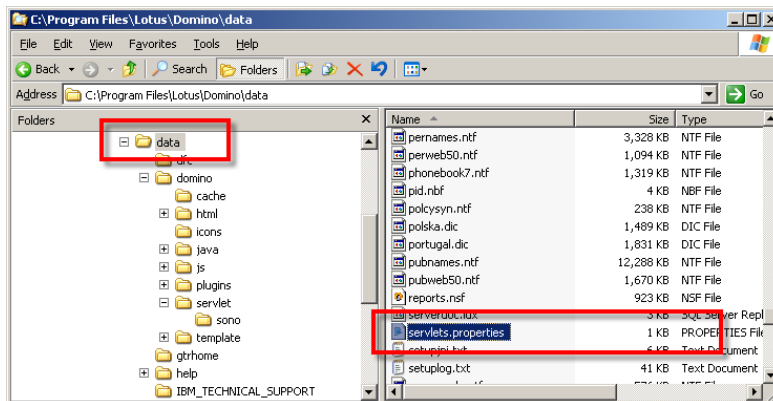
- Locate the “**servlets.properties**” file.
- This should be located in the **Domino program\data path** on the Domino server.
- Open the installation folder.

EXAMPLE
C:\Program Files\InfoBridge Software B.V.\Lotus Notes Synchronizer - Domino

- Copy the file “**servlets.properties**” from the installation folder.



5. to the **Domino program\data** path folder



6. You have to check that the **"servlets.properties"** file contains the following lines

```

servlet.dts.code=com.infobridge.sono.domtoso.DomToSO
servlet.std.code=com.infobridge.sono.sotodom.SOToDom

servlets.startup=dts std

```

NOTE
Be sure that you save the file after making changes.

Finalizing the installation

Start the Domino server

1. Go to the installation folder of your Domino installation and start the Domino server.
2. The Domino Server is starting up.
3. Verify the installation of the components.
4. After the Domino server has started again, check for the following lines on either the Domino server console, or in the Domino server log (log.nsf).

```
9/11/2010 04:27:56 PM InfoBridge SONO Capture: v1.2.x loading....  
9/11/2010 04:28:18 PM InfoBridge SONO Capture: v1.2.x loaded successfully.
```

```
9/11/2010 04:29:02 PM HTTP JVM: com.infobridge.sono.domtoso.DomToSO: init  
9/11/2010 04:29:03 PM HTTP JVM: SONO: DomToSo 1.2.x loaded successfully  
9/11/2010 04:29:04 PM HTTP JVM: com.infobridge.sono.sotodom.SOToDom: init  
9/11/2010 04:29:04 PM HTTP JVM: SONO: SOToDom 1.2.x loaded successfully  
9/11/2010 04:29:15 PM HTTP Server: Started
```

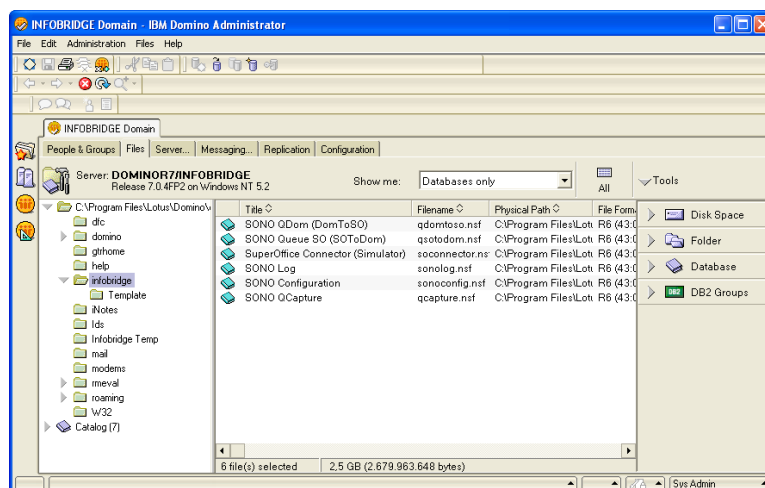
NOTE

The dates, time and version number will differ on your system.

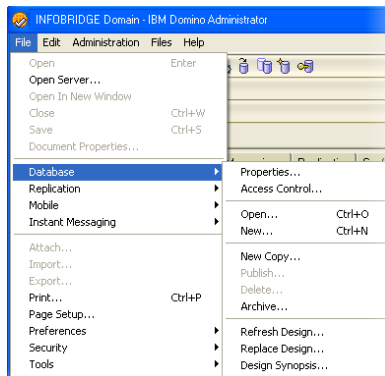
Refresh the database design

After you have signed the databases and the templates for the Domino Synchronizer we have to refresh the design of the database and template files.

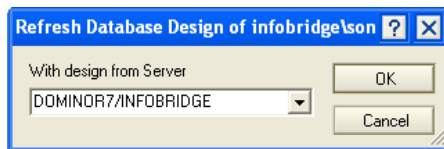
1. Open the Domino Administrator console on the Notes client.
2. Select the **'Files'** tab on the **'[COMPANY NAME] Domain'** tab.
3. Select the **'InfoBridge'** folder.



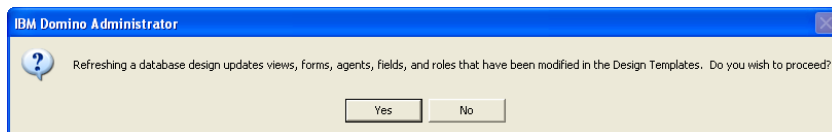
4. We have to refresh all the databases in the **'infobridge'** folder.
5. In the drop down box **"Show me"** make sure that you have selected **"Databases only"**.
6. Select the database file you want to refresh the design for in the folder **"infobridge"**.



7. Go to the menu item **"File -> Database"** in the upper left corner of the **"IBM Domino Administrator"** window.
8. Click the **'Refresh Design...'** menu item.
9. A popup screen is shown, default it shows the **"Local"** server.



10. Select the correct server (*this is the server you have installed the database and template files on*)
11. Press the **'OK'** button
12. A message will pop up.



13. Press **"Yes"** if you want to refresh the database design or press **"No"** to abort this operation
14. After pressing **"Yes"** a progress bar is shown in the bottom of the screen when the database design is refreshed

NOTE
You have to do this for all the database files that are used by the Domino Synchronizer.

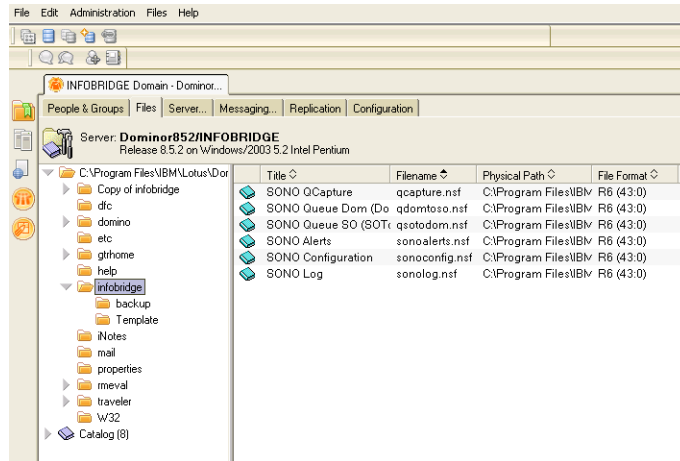
Signing the databases and templates

After the installation has finished the databases and templates of the Domino Synchronizer have to be signed. Signing is done by a Lotus Notes Domino System Administrator.

NOTE
It is important that the Lotus Domino Server is running before you can sign the databases and templates.

Signing the database

1. Open the Domino Administrator console on the Notes client;
2. Select the 'Files' tab on the '[COMPANY NAME] Domain' tab;
3. Select the 'infobridge' folder;

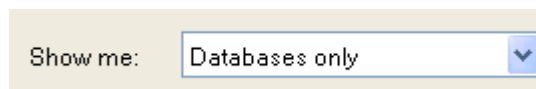


4. Next we have to sign all the databases in the 'infobridge' folder with a "Server ID" or an "Administrator ID"

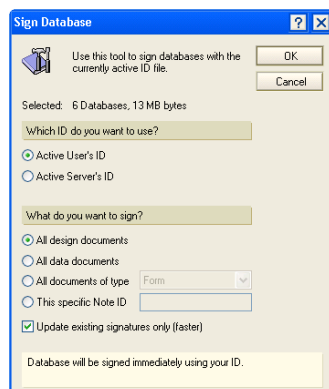
NOTE

It is recommended that either the Server ID or an Administrator ID is used. The ID which you use to sign MUST have at least Editor (with Delete) Access to all the Domino user's mail databases.

5. Make sure that you have selected "Databases only" in the drop down box "Show me";



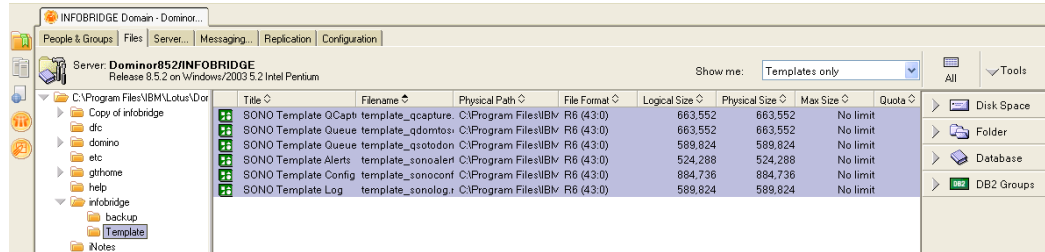
6. Select all the files in the folder "infobridge";
7. Right click with the mouse on one of the selected file items and a context sensitive menu is shown. Click the 'Sign...' menu item;
8. A popup screen is shown, here you have to select the 'ID' to sign the database files with;



9. When you have made the appropriate choices you can press the 'OK' button;
10. A progress bar is shown in the bottom of the screen when the settings you have set are applied to the databases;

Signing the template files

1. Open the Domino Administrator console on the Notes client;
2. Select the 'Files' tab on the '[COMPANY NAME] Domain' tab;
3. Select the infobridge\templates folder

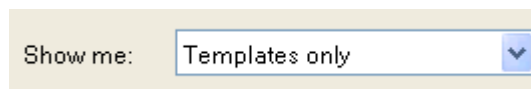


4. Next we have to sign all the databases in the '**infobridge\Template**' folder with a "**Server ID**" or an "**Administrator ID**"

NOTE

It is recommended that either the Server ID or an Administrator ID is used. The ID which you use to sign MUST have at least Editor (with Delete) Access to all the Domino user's mail databases.

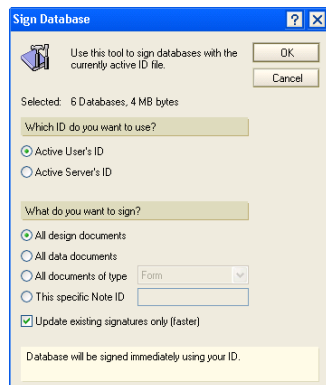
5. Make sure that you have selected "**Templates only**" In the drop down box "**Show me**";



6. Select all the files in the folder **infobridge\Templates**

Right click with the mouse on one of the selected file items and a context sensitive menu is shown. Click the '**Sign...**' menu item;

7. A pop up screen is shown, here you have to select the '**ID**' to sign the database files with;



8. When you have made the appropriate choices you can press the '**OK**' button;
9. A progress bar is shown in the bottom of the screen when the settings you have set are applied to the templates.

<http://www.crmplaza.com/Apps/Domino-Synchronizer-for-SuperOffice-CRM-v4>

©2012 InfoBridge Software, All rights reserved.

InfoBridge Software, CRMPlaza.com are registered trademarks of InfoBridge Software B.V.

home page : www.infobridge.com
knowledge base : <http://kb.infobridge.com>
support e-mail : support@infobridge.com
support phone : +31 (0)88 - 2762444